

PGP500 Series

- Three-piece construction for distribution flexibility
- Aluminum pumping sections for light weight
- Journal bushings for long life
- Pressure balanced bushing blocks for high efficiency
- Multiple sections available
- Available with either aluminum or cast iron mounting flange and rear cover



Parker's PGP500 Series fixed displacement gear pumps offer cost effective, high power density due to their aluminum, bushing block construction, making them ideal in a broad selection of markets such as Material Handling, Agriculture, Turf, as well as a variety of Industrial Applications. They are available as single or multi-section pumps.

Applications – Power steering pumps – priority valves available, Hydraulic Power Unit, Aerial Lift, Transfer pump

Markets – Vocational & Municipal, Agriculture, Construction, Forestry, Material Handling, Turf

PGP505 Frame Size	0020	0030	0040	0050	0060	0070	0080	0090	0100	0110	0120
Displacement – cm ³ /rev (in ³ /rev)	2 (0.12)	3 (0.18)	4 (0.24)	5 (0.31)	6 (0.37)	7 (0.43)	8 (0.49)	9 (0.55)	10 (0.61)	11 (0.67)	12 (0.73)
Max continuous pressure – bar (psi)	275 (3,988)	275 (3,988)	275 (3,988)	275 (3,988)	275 (3,988)	275 (3,988)	275 (3,988)	250 (3,625)	250 (3,625)	250 (3,625)	220 (3,190)
Max Speed – RPM	4,000	4,000	4,000	4,000	3,600	3,300	3,000	2,900	2,800	2,400	2,400
Approximate Weight – Lbs. [kg]	3.80 [1.72]	4.91 [2.22]	5.02 [2.27]	5.13 [2.32]	5.26 [2.38]	5.37 [2.43]	5.48 [2.48]	5.59 [2.53]	5.70 [2.58]	5.81 [2.63]	5.92 [2.68]

PGP511 Frame Size	0060	0070	0080	0100	0110	0140	0160	0180	0190	0210	0230	0270	0280	0310
Displacement – cm ³ /rev (in ³ /rev)	6 (0.37)	7 (0.43)	8 (0.49)	10 (0.61)	11 (0.67)	14 (0.85)	16 (0.98)	18 (1.10)	19 (1.16)	21 (1.28)	23 (1.40)	27 (1.65)	28 (1.71)	31 (1.89)
Max continuous pressure – bar (psi)	250 (3,625)	250 (3,625)	250 (3,625)	250 (3,625)	250 (3,625)	250 (3,625)	250 (3,625)	250 (3,625)	250 (3,625)	235 (3,410)	225 (3,265)	190 (2,755)	185 (2,685)	165 (2,395)
Max Speed – RPM	4,000	4,000	4,000	3,600	3,600	3,300	3,000	3,000	3,000	2,800	2,800	2,400	2,300	2,300
Approximate Weight – Lbs. [kg]	7.70 [3.5]	7.70 [3.5]	7.90 [3.6]	7.90 [3.6]	8.10 [3.7]	8.40 [3.8]	8.60 [3.9]	8.80 [4.0]	8.80 [4.0]	9.00 [4.1]	9.20 [4.2]	9.50 [4.3]	9.70 [4.4]	9.90 [4.5]

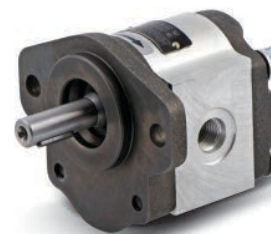
PGP517 Frame Size	0140	0160	0190	0230	0250	0280	0330	0360	0380	0440	0520	0700
Displacement – cm ³ /rev (in ³ /rev)	14 (0.85)	16 (0.98)	19 (1.16)	23 (1.40)	25 (1.53)	28 (1.71)	33 (2.01)	36 (2.20)	38 (2.32)	44 (2.68)	52 (3.17)	70 (4.27)
Max continuous pressure – bar (psi)	250 (3,625)	250 (3,625)	250 (3,625)	250 (3,625)	250 (3,625)	250 (3,625)	250 (3,625)	250 (3,625)	250 (3,625)	220 (3,190)	200 (2,900)	158 (2,300)
Max Speed – RPM	3,400	3,400	3,300	3,300	3,100	3,400	3,100	3,000	3,000	2,800	2,600	2,300
Approximate Weight – Lbs. [kg]	17.50 [7.92]	17.64 [8.0]	17.90 [8.12]	18.28 [8.29]	18.50 [8.37]	18.70 [8.50]	19.18 [8.70]	19.46 [8.83]	19.6 [8.91]	20.19 [9.16]	20.92 [9.49]	22.58 [10.24]

WARNING: This product can expose you to chemicals including lead or DEHP which are known to the state of California to cause cancer, birth defects, and other reproductive harm. www.p65warnings.ca.gov



PGP500H Series – “Silent Pump”

- Low noise emissions, minimized pulsation
- High efficiency
- High power density
- Ideal for electric/hybrid vehicles



Parker’s PGP500H Series pumps are specifically designed to reduce noise and pulsations from the hydraulic system and offer high pressure performance in a wide range of displacements (from 4.2 cc/rev to 200.4 cc/rev). Perfect for all stationary industrial indoor applications, and for any mobile application sensitive to noise such as electric and hybrid vehicles. The special pressure balancing assures maximum efficiency under all operation conditions.

Applications – Power steering pumps – priority valves available, Hydraulic Power Unit, Aerial Lift, Transfer pump, Lube pump

Markets – Vocational & Municipal, Agriculture, Construction, Forestry, Material Handling, Turf

PGP505H Frame Size	0042	0064	0083	0102	0129
Displacement – cm ³ /rev (in ³ /rev)	4.20 (0.26)	6.40 (0.39)	8.30 (0.51)	10.20 (0.62)	12.90 (0.79)
Max continuous pressure – bar (psi)	220 (3,191)	210 (3,046)	190 (2,756)	150 (2,176)	130 (1,885)
Max Speed – RPM	3,000	3,000	3,000	3,000	3,000
Approximate Weight – Lbs. [kg]	4.4 [2]	4.4 [2]	4.4 [2]	4.4 [2]	4.4 [2]

PGP511H Frame Size	0101	0126	0159	0179	0200	0221	0252	0283
Displacement – cm ³ /rev (in ³ /rev)	10.10 (0.62)	12.60 (0.77)	15.90 (0.97)	17.90 (1.09)	20.00 (1.22)	22.10 (1.35)	25.20 (1.54)	28.30 (1.73)
Max continuous pressure – bar (psi)	250 (3,626)	250 (3,626)	250 (3,626)	225 (3,408)	215 (3,118)	200 (2,901)	190 (2,756)	175 (2,538)
Max Speed – RPM	3,000	3,000	3,000	3,000	3,000	3,000	3,000	3,000
Approximate Weight – Lbs. [kg]	11 [5]	11 [5]	13 [16]	13 [16]	13 [16]	13 [16]	13 [16]	13 [16]

PGP517H Frame Size	0280	0322	0363	0405	0455	0503
Displacement – cm ³ /rev (in ³ /rev)	28.00 (1.71)	32.20 (1.96)	36.30 (2.22)	40.50 (2.47)	45.50 (2.78)	50.30 (3.07)
Max continuous pressure – bar (psi)	240 (3,481)	230 (3,336)	215 (3,118)	200 (2,901)	190 (2,756)	180 (2,611)
Max Speed – RPM	3,000	3,000	3,000	3,000	2,500	2,500
Approximate Weight – Lbs. [kg]	22 [10]	22 [10]	22 [10]	22 [10]	22 [10]	22 [10]

PGP523H Frame Size	0505	0635	0750	0909
Displacement – cm ³ /rev (in ³ /rev)	50.50 (3.08)	63.50 (3.88)	75.00 (4.58)	90.90 (5.55)
Max continuous pressure – bar (psi)	240 (3,481)	200 (2,901)	170 (2,466)	140 (2,031)
Max Speed – RPM	3,000	2,500	2,200	2,000
Approximate Weight – Lbs. [kg]	33 [15]	33 [15]	33 [15]	33 [15]

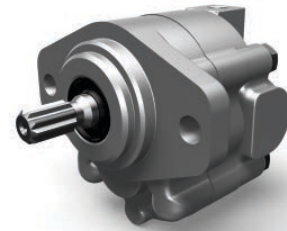
PGP529H Frame Size	0941	1014	1255	1509	1750	2004
Displacement – cm ³ /re (in ³ /rev)	94.10 (5.74)	101.40 (6.19)	125.50 (7.66)	150.90 (9.21)	175.00 (10.68)	200.40 (12.23)
Max continuous pressure – bar (psi)	150 (2,176)	140 (2,031)	130 (1,885)	110 (1,595)	100 (1,450)	90 (1,305)
Max Speed – RPM	1,800	1,800	1,800	1,800	1,800	1,800
Approximate Weight – Lbs. [kg]	66 [30]	66 [30]	66 [30]	66 [30]	66 [30]	66 [30]

WARNING: This product can expose you to chemicals including lead or DEHP which are known to the state of California to cause cancer, birth defects, and other reproductive harm. www.p65warnings.ca.gov



D / H / HD Series

- Three-piece construction
- All aluminum body for light weight & corrosion resistance
- Journal bushings for long life
- Pressure balanced thrust plates for high efficiency
- Multiple sections available (HD series only)
- D series also available with a 2, 4, & 6-quart tank kit. Tank kit may also be ordered separately.



Parker's D / H / HD Series fixed displacement gear pump is an all aluminum body pump. It's an ideal selection for mid-pressure range applications where light weight, corrosion resistance & efficient performance are important.

Applications – Hydraulic Power Units, Filter Carts, Transfer & Lube Pumps

Markets – Agriculture

D Series Frame Size	05	07	09	11	14	17	22	27
Displacement – cm ³ /rev (in ³ /rev)	1.87 (0.114)	2.76 (0.168)	3.45 (0.210)	4.29 (0.262)	5.38 (0.329)	6.62 (0.404)	8.55 (0.522)	10.5 (0.641)
Max continuous pressure – bar (psi)	172 (2,500)	172 (2,500)	172 (2,500)	172 (2,500)	172 (2,500)	172 (2,500)	172 (2,500)	138 (2,000)
Max Speed – RPM	4,000	4,000	4,000	4,000	4,000	4,000	4,000	3,000
Approximate Weight – Lbs. [kg]	2.0 [0.9]	2.1 [0.95]	2.2 [1.0]	2.4 [1.1]	2.5 [1.1]	2.7 [1.2]	2.8 [1.3]	3.0 [1.4]

H Series Frame Size	25	31	39	49	62	77	90
Displacement – cm ³ /rev (in ³ /rev)	9.88 (0.603)	12.35 (0.754)	15.44 (0.942)	19.3 (1.178)	24.14 (1.473)	30.18 (1.842)	36.5 (2.227)
Max continuous pressure – bar (psi)	172 (2,500)	172 (2,500)	172 (2,500)	172 (2,500)	172 (2,500)	138 (2,000)	103 (1,500)
Max Speed – RPM	4,000	4,000	4,000	4,000	3,600	3,600	3,600
Approximate Weight – Lbs. [kg]	5.0 [2.3]	5.3 [2.4]	5.6 [2.5]	5.9 [2.7]	6.3 [2.9]	6.6 [3.0]	7.0 [3.2]

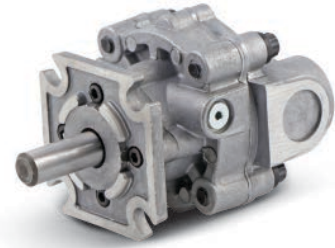
HD Series Frame Size	H25	H31	H39	H49	H62	H77
Displacement – cm ³ /rev (in ³ /rev)	9.88 (0.603)	12.35 (0.754)	15.44 (0.942)	19.3 (1.178)	24.14 (1.473)	30.18 (1.842)
Max continuous pressure – bar (psi)	172 (2,500)	172 (2,500)	172 (2,500)	172 (2,500)	172 (2,500)	138 (2,000)
Max Speed – RPM	4,000	4,000	4,000	4,000	3,600	3,600
Approximate Weight – Lbs. [kg]	5.0 [2.3]	5.3 [2.4]	5.6 [2.5]	5.9 [2.7]	6.3 [2.9]	6.6 [3.0]

WARNING: This product can expose you to chemicals including lead or DEHP which are known to the state of California to cause cancer, birth defects, and other reproductive harm. www.p65warnings.ca.gov



PGG Gerotor Series

- All aluminum construction for light weight
- Fixed clearance gear section for high mechanical efficiency



Parker’s PGG Gerotor Pump Series is a compact, corrosion resistance pump due to it’s light weight aluminum body. It is available as a standard pump, or a pump with a primary circuit relief valve.

Applications – Power steering pumps – priority valves available, Brake pump, Hydraulic power unit, Filter cart pump, Transfer pump, Lube pump

Markets – Agriculture, Mini Construction, Forestry, Material Handling, Turf, Vocational & Municipal

PGG Frame Size	0010	0016	0020	0025	0030
Displacement – cm ³ /rev (in ³ /rev)	3.57 (0.218)	6.10 (0.372)	7.38 (0.450)	9.50 (0.580)	11.47 (0.700)
Max continuous pressure – bar (psi)	138 (2,000)	138 (2,000)	138 (2,000)	138 (2,000)	103.5 (1,500)
Max Speed – RPM	3,500	3,500	3,500	3,500	3,000
Approximate Weight – Lbs. [kg]	2.8 [1.25]	3.0 [1.36]	3.1 [1.41]	3.3 [1.50]	3.5 [1.59]

WARNING: This product can expose you to chemicals including lead or DEHP which are known to the state of California to cause cancer, birth defects, and other reproductive harm. www.p65warnings.ca.gov

